

Single Stream Recycling

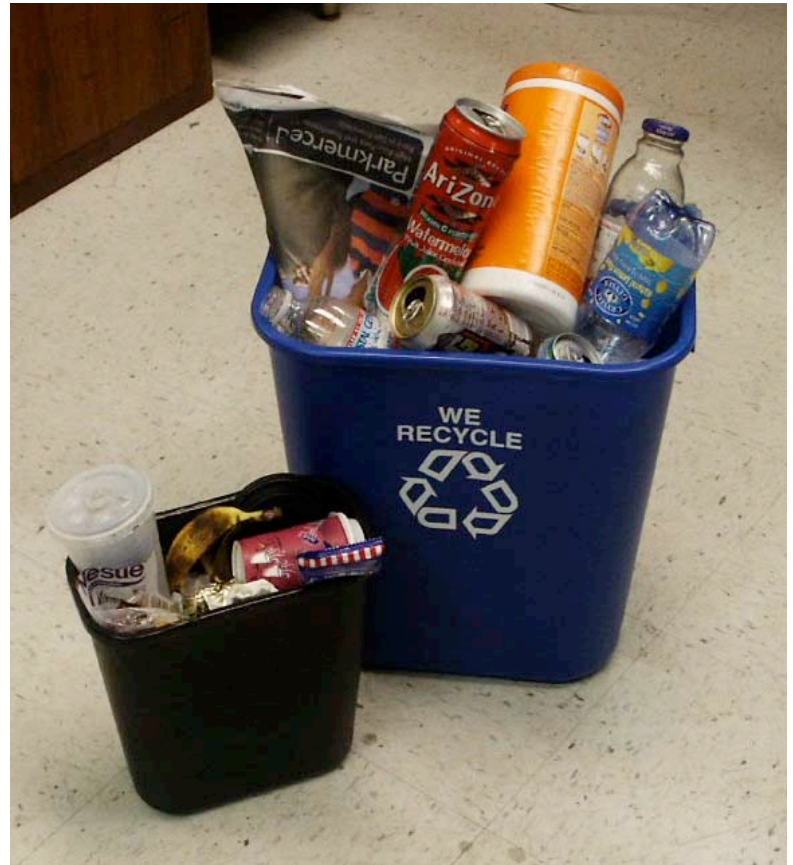
Single stream recycling increases recycling and is easy for the user. The larger blue container is for all dry mixed recyclables and the smaller black container is for non-recyclables. See below for sorting directions.

'Dry' Recyclables – Blue bin

- ✓ All Mixed paper
- ✓ Capped or empty bottles
- ✓ Empty aluminum cans
- ✓ Clean & dry plastic containers ♻️ # 1-7

'Wet' Trash – Black bin

- ✓ Coffee cups
- ✓ Food waste
- ✓ Food wrappers
- ✓ Facial tissue, etc.
- ✓ Plastic bags



Thank you for your participation!!
Together we can reduce our waste!

Questions? Need special arrangements? Please contact Caitlin Fager,
Recycling Coordinator, @ 53868